



Dear Mike,

Firstly, welcome back for 2025!

Kicking off the year the Australian Federal Government has taken the positive step of releasing their highly anticipated National Autism Strategy. We've taken a look, and below we discuss what the strategy means for Australian business and how it stacks up against similar strategies overseas.

At auticon, we seem to be constantly talking about the world of Artificial Intelligence. So, we're starting the year with a bit of fun intended to test your knowledge of the history of AI, so why not check out our short 10 question pop quiz and test your skills!

Remember, we are always on the lookout for the next IT challenge! So why not reach out and tell us about your latest IT project ([click here](#) to email) we'd love to help you deliver!

All the very best,

Bodo Mann - Chief Executive Officer & Managing Director - Australia & Aotearoa



[Email Bodo Mann](#)



Australian Government

# National Autism Strategy

2025–2031

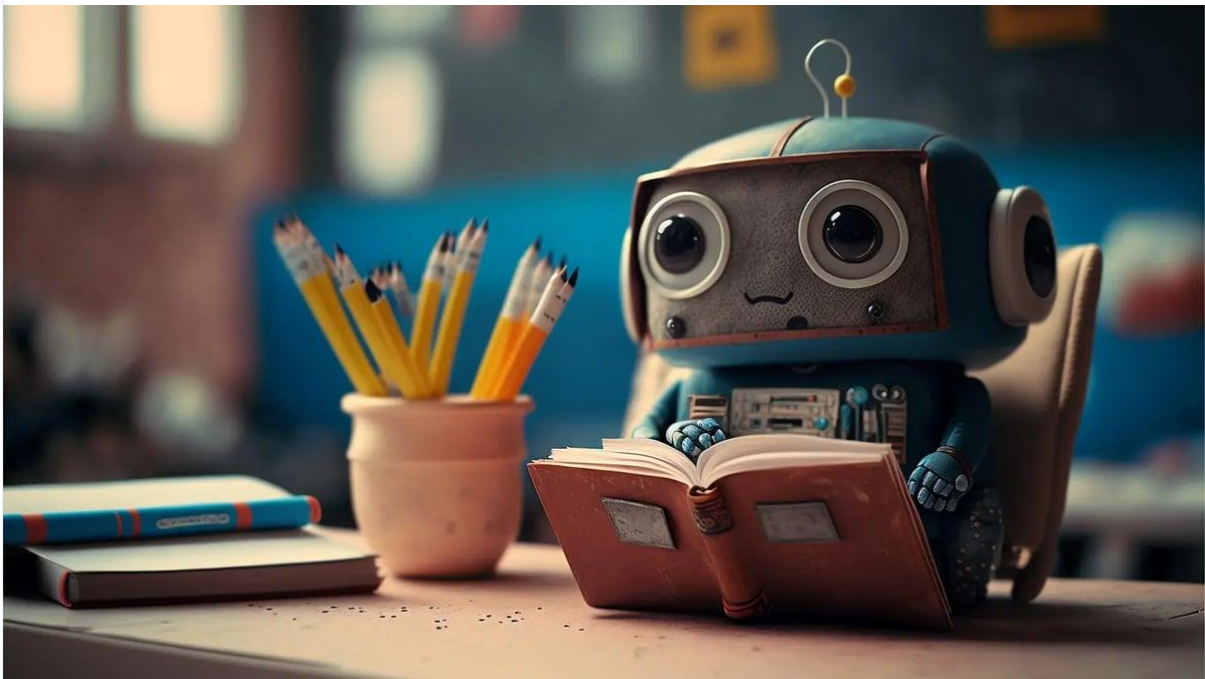


**The National Autism Strategy, a symbolic step in the right direction for employment**

Earlier this month the Department of Social Services finally released its National Autism Strategy. The strategy strongly resembles the Canadian National Autism Strategy and is a good symbolic first step in the right direction for the employment of autistic people but offers very little for employers or workplace support.

The strategy outlines key outcome areas social inclusion, economic inclusion, diagnosis and health & mental health. The government has devoted \$42.3 million in funding to roll out the entire strategy over the next 2 to 5 years.<sup>[1]</sup> The proportion of this funding that is allocated to boosting pathways to meaningful employment is \$915,000, a figure that is woefully short of what is needed to create meaningful employment opportunities for autistic people.

[Read more](#)



**AI Quiz! Test your knowledge of the history of Artificial Intelligence**

Kicking off the year with a bit of fun! Are you intrenched in the history of emerging technologies? We want you to test your historical AI knowledge, proving one and for all you are the ultimate AI ace!

Take our quick pop quiz to find out if you're an authentic AI aficionado! Perhaps challenge the team to see who comes out on top.

[Take the Quiz!](#)

---

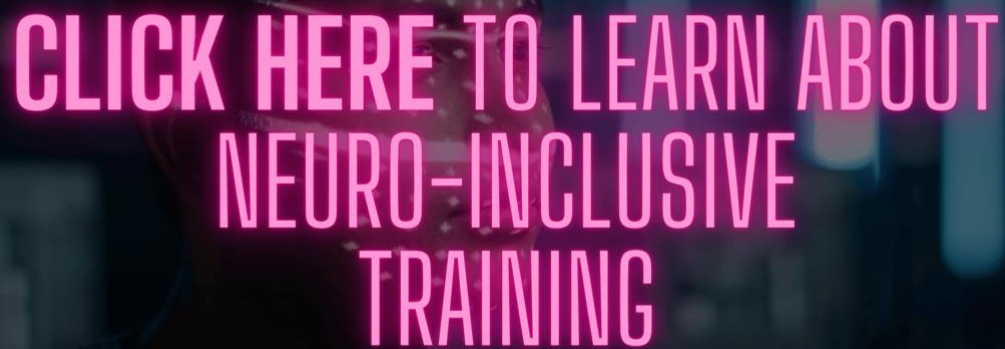


**Want to become a Ben Taylor Racing Supporter?**

[Click here to find out more.](#)

**BTR**  
BEN TAYLOR RACING

---



# CLICK HERE TO LEARN ABOUT NEURO-INCLUSIVE TRAINING

---

## Why hire autistic talent?

As an award-winning technology consultancy, auticon recognises that adults on the autism spectrum find it difficult to secure or maintain employment.

To help them succeed, auticon pairs our technology consultants with job coaches who provide a compassionate management style. Likewise, we act as a catalyst for wider change in the organisation by integrating autistic colleagues into existing workplaces.

[Learn more](#)

## Work with us!

If you or someone you know is on the autism spectrum and skilled in information technology, please encourage them to contact auticon to learn more about working with us.

[Learn more](#)

Have questions?

Contact Us: [info-aus@auticon.com](mailto:info-aus@auticon.com)



auticon Australia Pty Ltd, Level 35, Tower One Barangaroo Int. Towers  
Sydney, 100 Barangaroo Ave, Sydney, NSW 2000, Australia

[Unsubscribe](#) [Manage preferences](#)